



**Production Specification
Club Live Shows
2009-2010
Revision 3.1
(March 2010)**

Contents

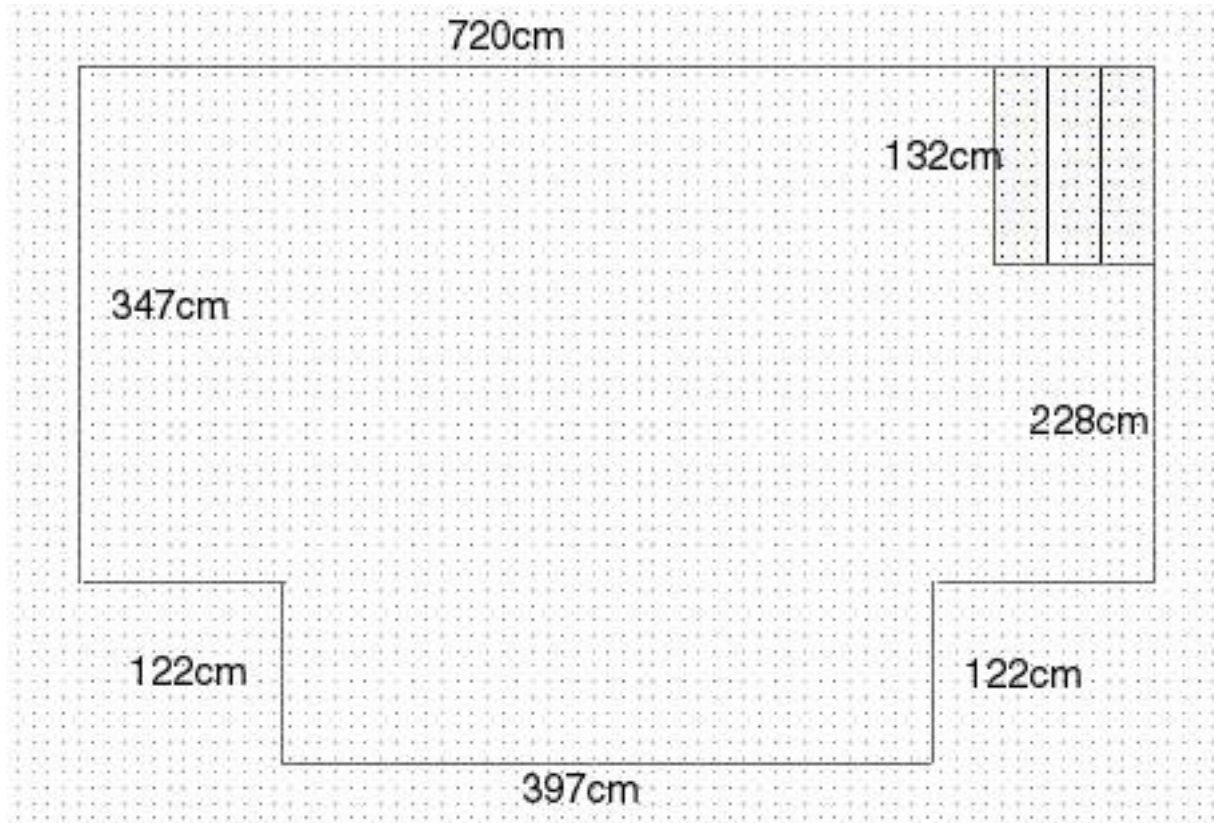
2	Contents
3	Contacts
4	Stage and general information
5 – 6	PA
7 – 8	Lighting
9	Dressing Rooms
10 – 12	Finding us and parking
13 – 15	Local Information

Contacts

<p>Venue address – navigational 53 Degrees Brook Street Preston PR1 7BQ</p> <p>Box Office: 01772 894873</p>	<p>Events Manager (Bookings & Hires) David Evans</p> <p>Tel: 01772 894861 Mob: 07812 347 680 (primary contact) Fax: 01772 894975 e-mail: djevans@uclan.ac.uk devans@53degrees.net</p>
<p>Event Operations Manager (Production and Marketing) John Tunley</p> <p>Tel: 01772 894849 Mob: 07812 347 680 (primary contact) Fax: 01772 894975 e-mail: jptunley@uclan.ac.uk</p>	<p>Venue Manager Matt Smith</p> <p>Tel: 01772 894849 Mob: 07751 081 301 Box Office: 01772 894873 Fax: 01772 894975 e-mail: MJSmith7@uclan.ac.uk</p>
<p>Production Coordinator (joint) Dave Weeks</p> <p>Tel: 01772 894864 Mob: 07843 261 889 Fax: 01772 894975 e-mail: dweeks@uclan.ac.uk</p>	<p>Production Coordinator (joint) Dave Gate</p> <p>Tel: 01772 894864 Mob: 07870 269 456 Fax: 01772 894975 e-mail: dgate@uclan.ac.uk davegatetech@yahoo.co.uk</p>
<p>Venue Show Representative Vicky Lyth</p> <p>Tel: 01772 894862 Mob: 07981 656 436 Fax: 01772 894975 e-mail: vlyth@uclan.ac.uk</p>	<p>Ticketing co-ordinator Leona Marsh</p> <p>Tel: 01772 892466 Fax: 01772 894975 e-mail: lmarsh1@uclan.ac.uk</p>

Club Stage

The club at 53° is situated on the first floor of the building. It holds 400 people standing and has a wooden stage with a LiteDeck thrust between the PA stacks. The stage is 60cm high.



Load-in for the club is either by way of stairs from the stage door on the ground floor, or if there is no event on in the venue via the venue floor and passenger lift.

Dressing rooms are shared between the two rooms, and will be allocated depending on what events are on.

This room does not normally accommodate touring PAs; but we are willing to consider this if necessary.

The following pages give more detail on the PA and lighting available in the club.

Club PA

The club PA is based on Kling & Freitag speakers ground stacked to either side of the stage. Each stack consists of:

2 x SW118 18" sub
1 x SW215 2 x 15" high sub/low mid
2 x Line 212-6 mid/top

These are run by 3 x Lab Gruppen Lab 4000 amps.

In addition there are flown delay speakers and associated subs which are not normally used for live events, but can be switched on if required. These consist of:

2 x Ohm BNC 1 x 15" + 1.5" flown from the end of the lighting rig
2 x K&F SW115 sub stacked by the DJ booth

These are run by a Lab Gruppen Lab 2002 amp for the Ohm boxes and a bridged Lab Gruppen i900 amp for the subs.

The club can accommodate up to six monitor mixes from front of house (although six mixes would mean losing one FX send). We currently have a total of 6 x K&F CA1215 wedge monitors and a drum fill consisting of 1 x Ohm 1x18" sub and 1 x Ohm BNC 15" + 1.5" for mid and top. These are run from 3 x Lab Gruppen Lab 2002 amps.

We can re-arrange the monitor setup to provide a separate monitor desk if required, but this is limited by the space available on the stage and may not be possible if the stage is crowded.

At front of house we can either supply an Allen & Heath GL3300 40:8:2 analogue desk or a Yamaha LS9 32 digital.

The front of house rack contains:

1 x Apex PE230 graphic/parametric equaliser for FOH
3 x Apex GE230 graphic equaliser for monitors
2 x Drawmer DL441 quad compressor
2 x Drawmer DS401 quad gate
2 x Yamaha SPX2000 multi effects
1 x Lexicon MPX100 delay/reverb (with tap facility)

The rack also has a TEAC CD player, soon to be supplemented by a Numark iPod dock and transport device and a Behringer real-time frequency analyser.

The following mics and DIs are available from stock, we can also hire in specific mics to order if required:

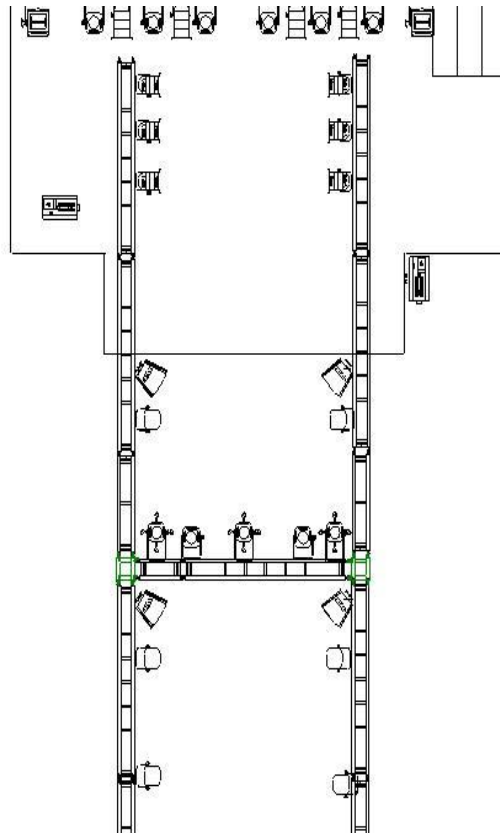
- 8 x Shure SM58
- 2 x Shure Beta 58a
- 8 x Shure SM57
- 1 x Shure Beta 57a
- 1 x Shure Beta 52a
- 2 x Sennheiser e602
- 4 x Sennheiser e604
- 2 x Sennheiser e606
- 2 x Sennheiser K6P condenser

- 5 x BSS AR133 active DI box
- 3 x Emo passive DI box
- 1 x Behringer 4-way rack mount active DI

Various tall, medium and short boom stands

Club Lighting rig & lighting power

The club lighting rig consists of a 24' back truss and an H shaped truss that extends from the side of the stage over the dancefloor. All truss is Slick Minibeam.



The back truss is a 24' Slick Minibeam. There is a black serge backdrop on the rear cord, while the front has 6 x iPix Satellite LED fixtures, 2 x Anytronics Deathstar strobes and 4 x PAR 64 configured as audience blinders.

The 'front truss' section of the H truss has a further 2 x iPix Satellite and 3 x ETC Source 4 25°-50° zoom profiles.

On each side of the H are 3 x LED PAR covering the stage and 2 x EVL spin and 3 x High End Trackspot covering the dancefloor.

There is a Unique Mk.2 Hazer at stage left, which is DMX controlled.

The house lighting desk is an Avolites Pearl 2000, upgraded to 2004 software.

DMX Channels

Item(s)	Start	End
Source 4 zoom profiles	1	3
DJ Profile	4	4
Spare dimming channels	5	18
Solar 250 projectors	19	20
UV Gun	21	21
Arcline	22	22
Spare relay channels	23	24
Rear Trackspots	77	83
Mid Trackspots	84	90
Front Trackspots	91	97
Rear EVL Spins	231	234
Front EVL Spins	235	238
Front SL LED PAR	239	242
Mid SL LED PAR	243	246
Rear SL LED PAR	247	250
Front SR LED PAR	251	254
Mid SR LED PAR	255	258
Rear SR LED PAR	259	262
Back Truss iPix Satellite #1	263	267
Back Truss iPix Satellite #2	268	272
Back Truss iPix Satellite #3	273	277
Back Truss iPix Satellite #4	278	282
Back Truss iPix Satellite #5	283	287
Back Truss iPix Satellite #6	288	292
Front Truss iPix Satellite SL	293	297
Front Truss iPix Satellite SR	298	302
ZR22 Smoke Machine	505	505
SL Anytronics Deathstar Strobe	509	509
SR Anytronics Deathstar Strobe	510	510
Unique Hazer Mk2 Pump	511	511
Unique Hazer Mk2 Fan	512	512

Dressing Rooms

All dressing rooms are situated on the first floor of the Venue.

Dressing Room 1

9m x 3.80m

Has integral shower & toilet, large fridge, 3 x three seater sofa, full length mirror, clothes rail, assortment of chairs, tables for riders etc, internal phone point, wi-fi and 32" Plasma TV.

Dressing Room 2

3.88m x 3.33m plus 3.31m x 1.95m (L shaped)

Has integral shower & toilet, large fridge, three seater sofa, assortment of chairs, table for riders etc., internal phone point, wi-fi and 32" Plasma TV.

Dressing Room 3

2.77m x 2.68m

Has integral toilet, fridge, assortment of chairs, tables for riders etc., internal phone point.

Production Office

The Production Office is situated on the ground floor between the stage door and the venue stage. It has two desks, two external phones, broadband & wireless, fridge, microwave, and chairs and sofa for visitors.

How to find 53°



Journey Times

Location	Train	Coach
London	2hr 45min	5hr 40min
Bristol	3hr 20min	5hr 25min
Edinburgh	2hr 45min	5hr 5min
Glasgow	2hr 40min	3hr 50min
Birmingham	1hr 40min	2hr 40min
Leeds	1hr 55min	2hr 50min
Sheffield	1hr 55min	2hr 40min
Liverpool	1hr 5min	2hr 30min
Manchester	45min	55min
Blackpool	30min	35min

Directions by road:

Leave M6 at junction 31 (A59 Preston / Clitheroe).

Turn left for Preston.

After pedestrian crossing go ahead at mini island (New Hall Lane).

At the end of New Hall Lane turn right onto Ringway (opposite Homebase) at traffic lights.

Follow Ringway through pedestrian crossing to next lights. Stay in middle lane. Go ahead at lights. Middle lane becomes left lane after feed to Church Street.

At next lights each lane divides into two. Move to the right hand ahead lane (second out from the pavement). Go ahead at lights (A59 Liverpool and City Centre).

Stay in that lane to next lights at bottom of hill. Continue ahead.

At next lights move into right hand feeder lane and turn right (A583 Blackpool; Corporation Street)

Go ahead at next lights.

At traffic island take first exit directly in front of you (A583 Blackpool; Fylde Road)

Approximately 200 metres from the island Fylde road bears left and there is a right turning onto Brook Street. We are the angular, metal clad building on the junction with Brook Street.

Turn right onto Brook Street then right again onto the access road that runs up the side of the building. There is a barrier at the end (code will be sent separately as it changes on a regular basis).

Buses should park at the far side of the carpark parallel to the wooden fence surrounding the air handling unit. Landline power is on the back wall of the building next to the beer gas cage.

Trucks have their own bay directly in front of the barrier. Other vehicles will be accommodated in other spaces. Please park as directed as we share the use of the carpark and have to book the space that we use in advance.

Please use postcode PR1 7BQ on Satellite Navigation. If driving a large vehicle from the north to Preston please do not follow instructions to turn onto Victoria Street – the turning from there onto Brook Street is very tight and heavily parked during the day – several drivers have had problems there.

Local Information

Doctor (daytime):	University Medical Centre NHS Direct	01772 892598 0845 4647
Hospital:	Royal Preston Hospital	01772 716565
Dentist (daytime):	Adelphi Dental Centre	01772 253443
Chemist (daytime):	DDL Davies Plungington Road	01772 556030
24 Hour Garage:	Key Filling Station 38-40 Garstang Road	01772 254720
Late opening convenience stores:		
	Spar (24 Hour) 63-65 Plungington Road	01772 201644
	Night Owl 2 Fylde Road	01772 251103
Off Licence:	Essentials SU Building	01772 894874
	Booze Brothers 69 Fylde Road	01772 887549
Pubs (with food service):		
	Source SU Building	01772 894852
	The Guild 99 Fylde Road	01772 252870
	The Ship 3 Fylde Road	
	The Adelphi 44 Fylde Street	01772 897961
Coffee Bars:	The Atrium SU Building	01772 892636
	Equator Adelphi Street	

Restaurants

Indian:	Spice of Bengal 97 Friargate (also does takeaway)	01772 251462
	Dilshad 121-122 Friargate (also does takeaway)	01772 250826
Italian:	Bella Roma 138-139 Friargate (also does takeaway)	01772 252305
	Tinos 21 Hill Street	01772 253888
Chinese:	Great Times 77-79 Lancaster Road	01772 250173
	Ming Dynasty West Strand Park	01772 258888
Thai:	Thai Orchid 33 Cannon Street	01772 257711